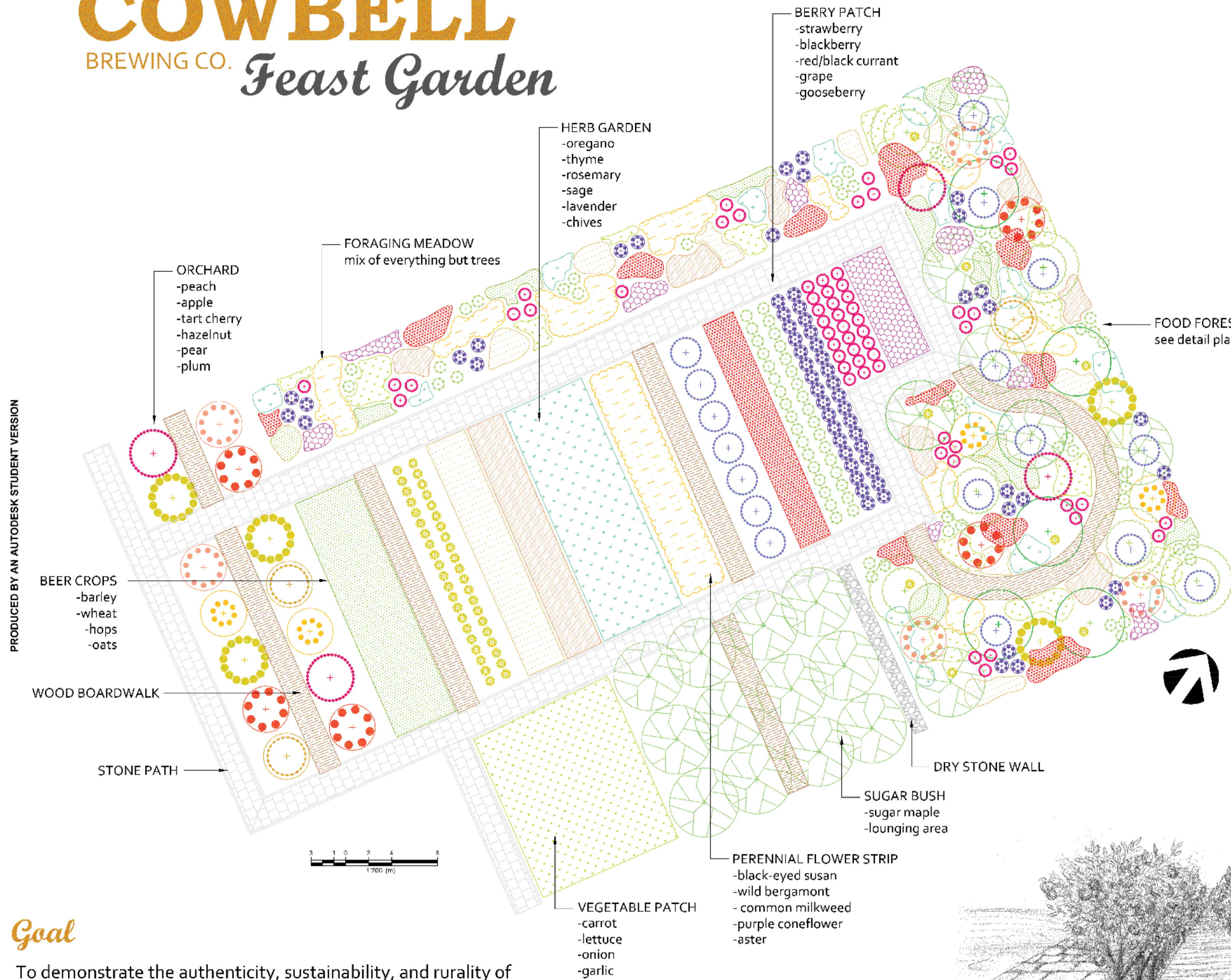
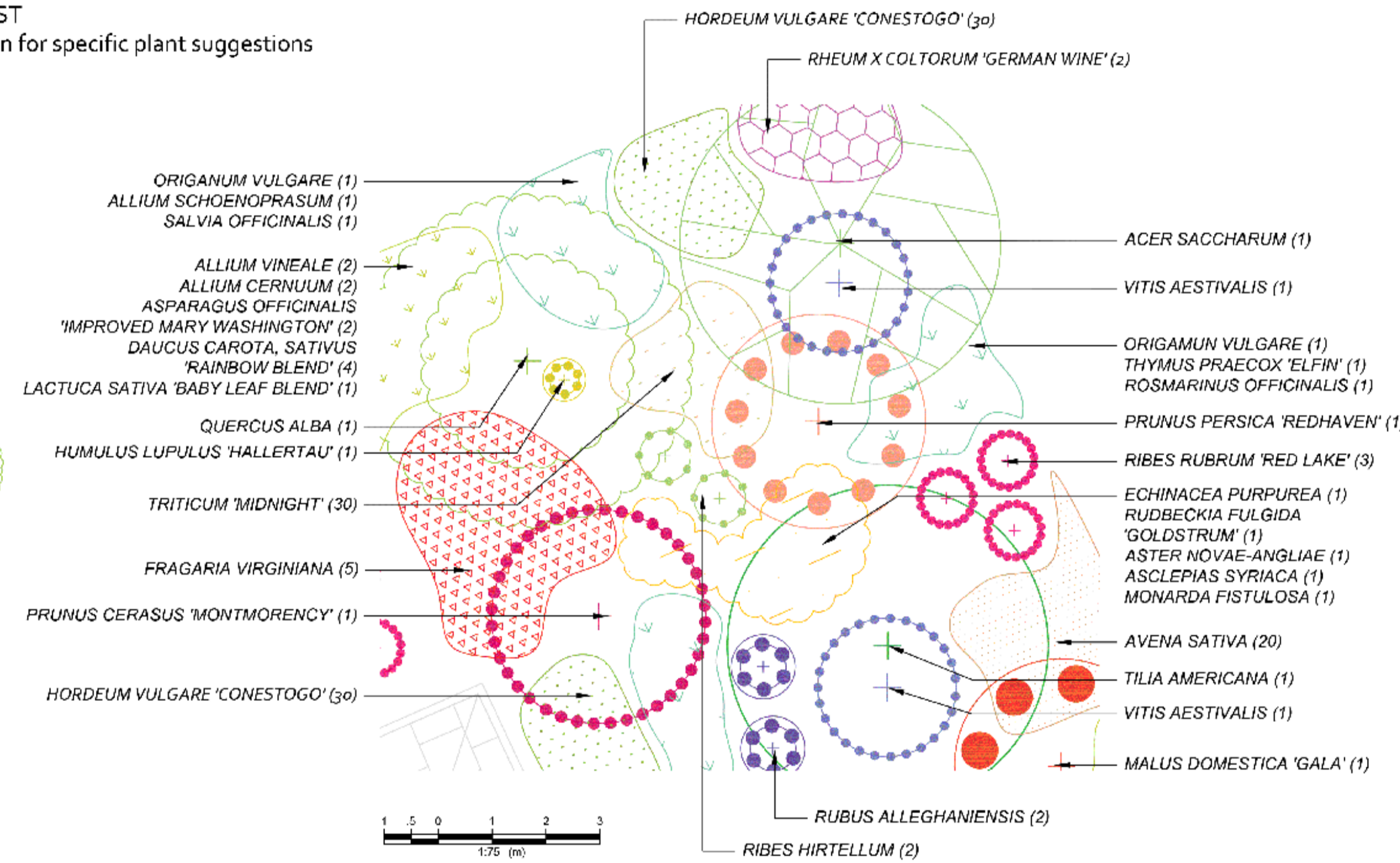


# The COWBELL BREWING CO. Feast Garden



Level	Name	Mature Size	Function	Quantity
Canopy	<i>Quercus alba</i> (White Oak)	H: 22m W: 20m	Acorns provide food for wildlife	1
	<i>Acer saccharum</i> (Sugar Maple)	H: 30m W: 18m	Maple syrup made from sap	1
	<i>Tilia americana</i> (Basswood)	H: 25m W: 15m	Edible young leaves	1
Fruit Trees	<i>Prunus persica</i> 'Redhaven' (Redhaven Peach)	H: 5m W: 4m	Pink flowers, sweet fruit for eating	1
	<i>Prunus cerasus</i> 'Montmorency' (Montmorency Tart Cherry)	H: 6m W: 5m	White flowers, tart fruits for jam	1
	<i>Malus domestica</i> 'Gala' (Gala Apple)	H: 5m W: 5m	Pink flowers, sweet fruit for eating	1
Vines	<i>Humulus lupulus</i> 'Hallertau' (Hallertau Hops)	H: 5m W: 1m H: 30m	Used for brewing Absent Landlord Country Kolch Edible purple berries	1 2
	<i>Ribes hirtellum</i> (Wild Gooseberry)	H: 1.5m W: 1.5m	Edible purple berries	2
Shrubs	<i>Rubus alleghaniensis</i> (Alleghany Blackberry)	H: 125cm W: 200cm	White flowers and sweet black fruit	2
	<i>Ribes rubrum</i> 'Red Lake' (Red Lake Currant)	H: 150cm W: 150cm	Edible red berries	4
Herbs	<i>Origanum vulgare</i> (Oregano)	H: 45cm W: 60cm	Culinary herb	2
	<i>Allium schoenoprasum</i> (Wild Chives)	H: 60cm W: 90cm	Edible leaves and purple flowers, deters pests	1
	<i>Thymus praecox</i> 'Ffin' (Thyme)	H: 5cm W: 40cm	Pink flowers, deters pests	1
	<i>Rosmarinus officinalis</i> (Rosemary)	H: 120cm W: 120cm	Culinary herb	1
	<i>Salvia officinalis</i> (Sage)	H: 100cm W: 100cm	Culinary herb	1
Perennials	<i>Rudbeckia fulgida</i> 'Goldstrum' (Black-eyed Susan)	H: 60cm W: 60cm	Golden yellow flowers attract pollinators	1
	<i>Monarda fistulosa</i> (Wild Bergamont)	H: 110cm W: 90cm	Pink fragrant flowers that attract many pollinators and hummingbirds, deters pests	1
	<i>Asclepias syriaca</i> (Common Milkweed)	H: 100cm W: 40cm	Edible shoots, attracts butterflies, winter seed pods	1
	<i>Aster novae-angliae</i> (New England Aster)	H: 125cm W: 60cm	Deep purple/yellow late season flowers attract pollinators	1
	<i>Echinacea purpurea</i> (Purple Coneflower)	H: 120cm W: 60cm	Large purple flowers attract pollinators	1
Ground Cover	<i>Avena sativa</i> (Oats)	H: 1m	Suppress weeds, fix nutrients, used to make Lorna Bray Flygirl Nitro Oatmeal Stout	20
	<i>Fragaria virginiana</i> (Wild Strawberry)	H: 20cm W: 40cm	White flowers and edible small red berries, attracts birds	5
Vegetables	<i>Rheum x coltarum</i> 'German Wine' (Rhubarb)	H: 70cm W: 80cm	Pump edible stalks for baking, jam, wine	2
	<i>Allium vineale</i> (Wild Garlic)	H: 100cm W: 10cm	Pink umbels, edible bulbs, deters pests	2
	<i>Allium cernuum</i> (Nodding Onion)	H: 60cm W: 30cm	Pink globe-like flowers, edible bulbs and leaves, deters pests	2
	<i>Asparagus officinalis</i> 'Improved Mary Washington' (Asparagus)	H: 175cm W: 50cm	Edible stalks	2
	<i>Daucus carota, sativus</i> 'Rainbow Blend' (Carrot)	H: 15cm W: 7cm	Edible roots	2
Grasses	<i>Lactuca sativa</i> 'Baby Leaf Blend' (Leaf Lettuce)	H: 15cm W: 15cm	Edible leaves	1
	<i>Hordeum vulgare</i> 'Conestogo' (Conestogo Barley)	H: 80cm	Used for beer brewing	60
	<i>Triticum 'Midnight'</i> (Midnight Wheat)	H: 1m	Used for beer brewing	30



Perspective of the boardwalk path through the orchard



Perspective of the boardwalk path through the food forest

## Goal

To demonstrate the authenticity, sustainability, and rurality of Cowbell Brewing Company through planting design.

## Objectives

1. Display what the crops used in the Cowbell's food and drinks look like while they are growing.
2. Increase local biodiversity by providing habitat for birds and other wildlife by using a wide variety of beneficial plants.
3. Create a unique, memorable and delightful learning experience for visitors.