

# Studio

## Problématique

**Abandoned Landscape**  
A landscape that ceases to support a community, thereby impeding its ability to thrive

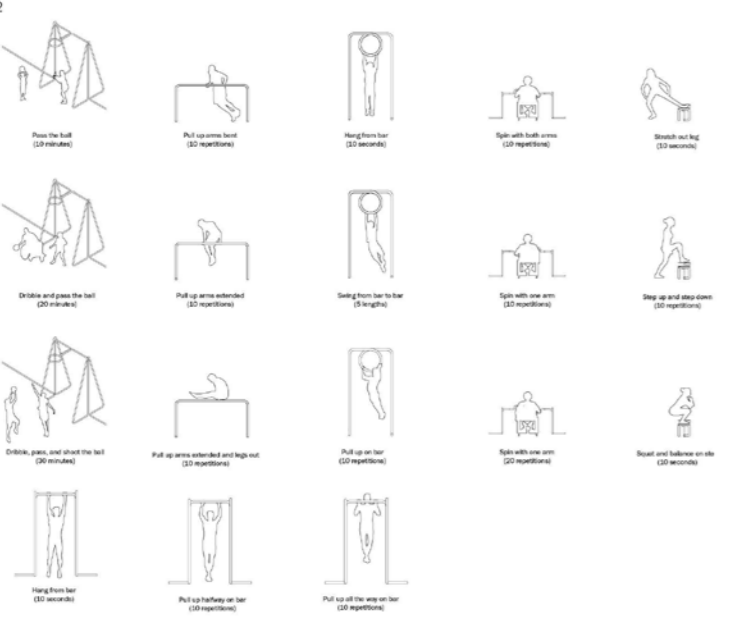
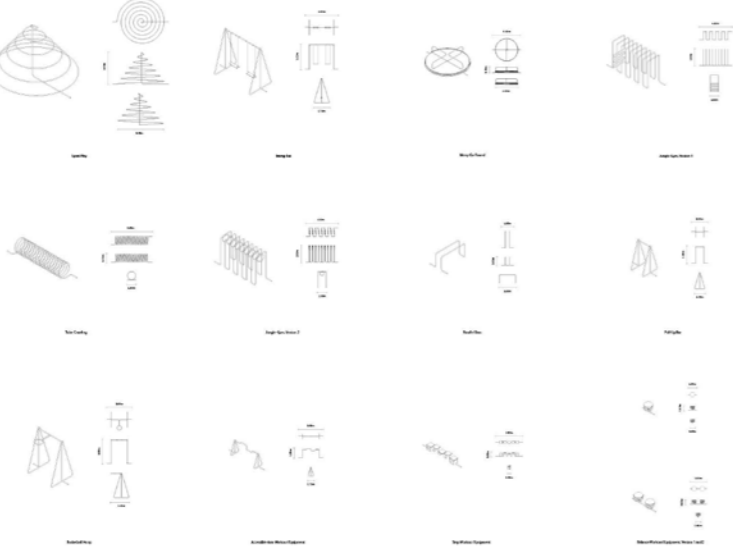
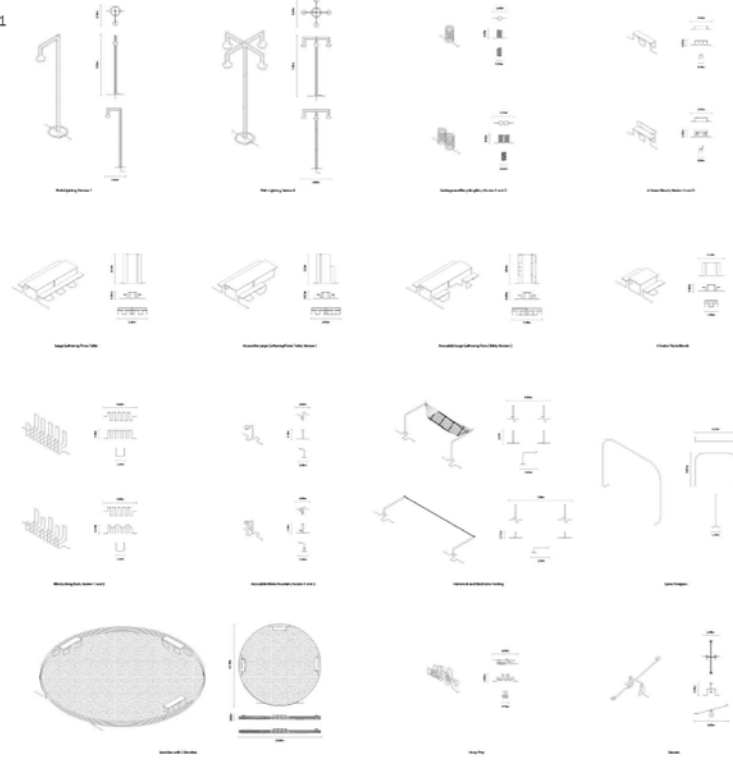
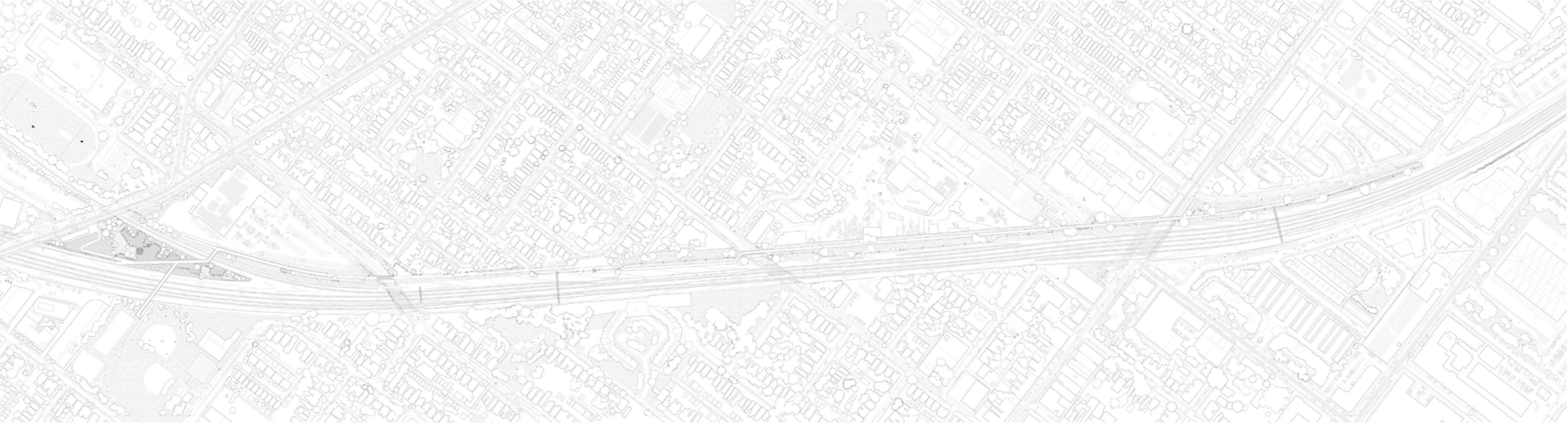
**moveTO**

Our approach to the West Toronto Rail Path extension looks at how landscape design can promote public health by facilitating physical activity for all ages and abilities through built form and green space in an urban setting. Fostering connectivity between the diverse communities in the adjacent areas, our site is defined by a linear route dubbed "the spine" composed of hollow steel tubing, which allows for continuous engagement along the site as it twists into elements of play and fitness.

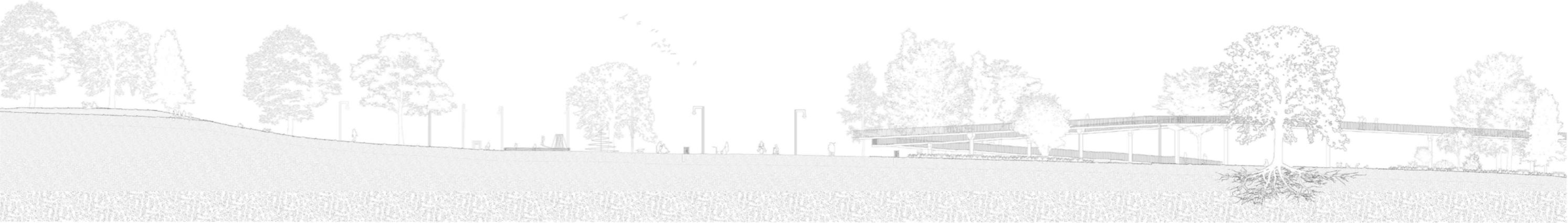
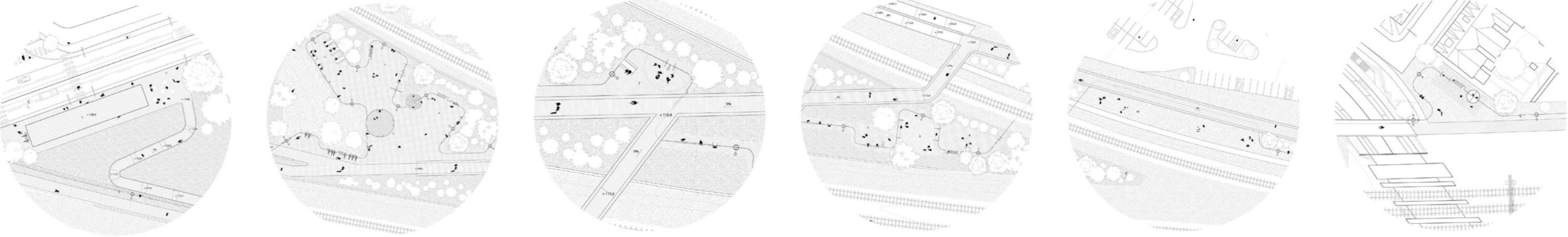
Integral elements of park design, such as lights and benches, are spaced at regular and strategic intervals and will be permanent fixtures along the rail path, while typologies for play and physical activity can be replaced or reconfigured as demographics of the surrounding neighborhoods change. Our atypical site is intersected by fully accessible ramps providing connections to No Frills and Sorauren Park. The on-site building is envisioned as a fitness studio that would offer classes and act as a meeting spot for all members of the community.

To balance the linear design elements weaving through the site we chose a more naturalistic planting scheme suited to the existing site conditions. Our project seeks to foster not only human communities but ecological ones as well.

Overall, we believe that moveTO will promote community engagement in a currently under-utilized area, and can become an exemplar for how landscape can promote public health and human well-being in urban areas.



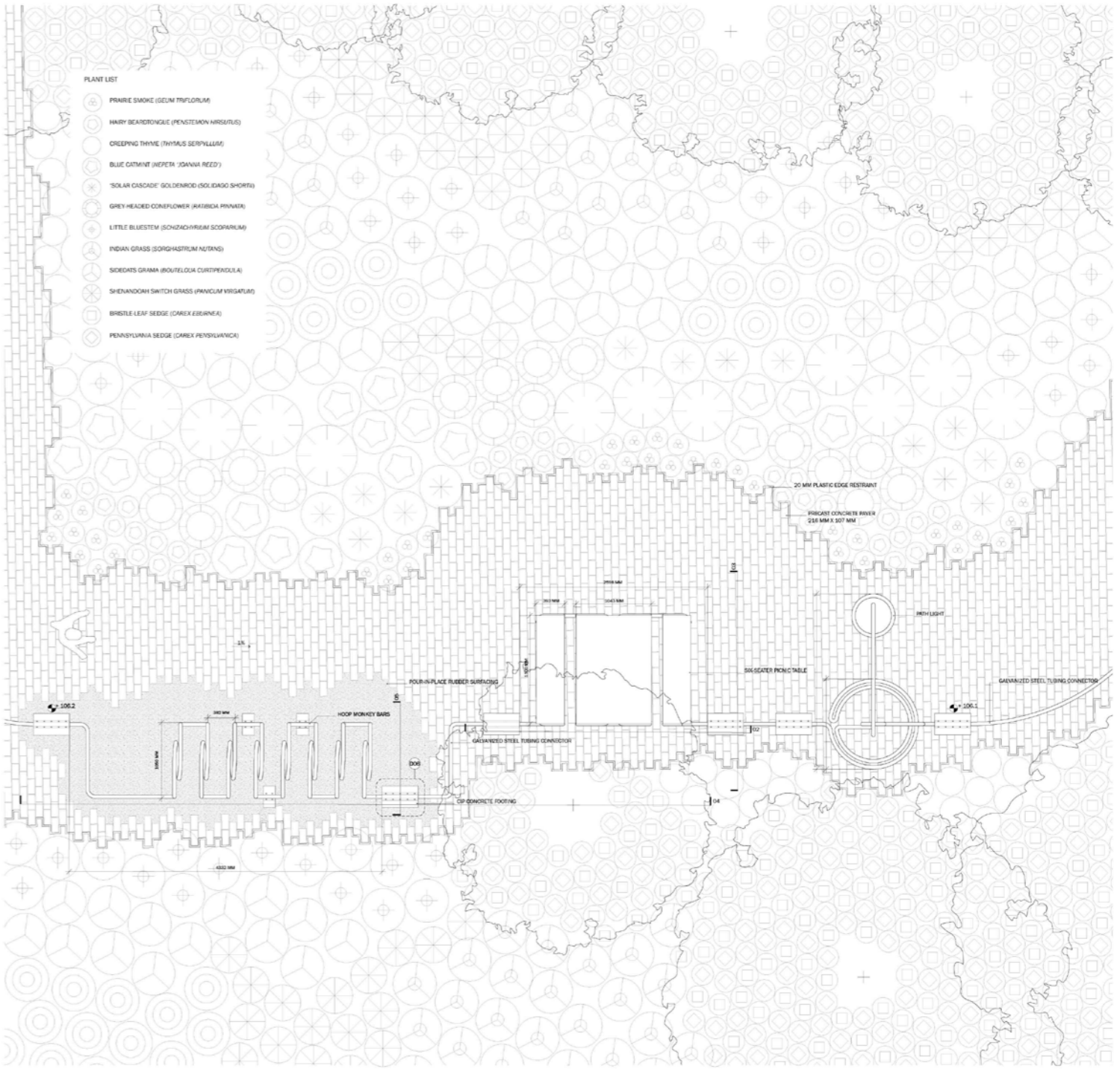
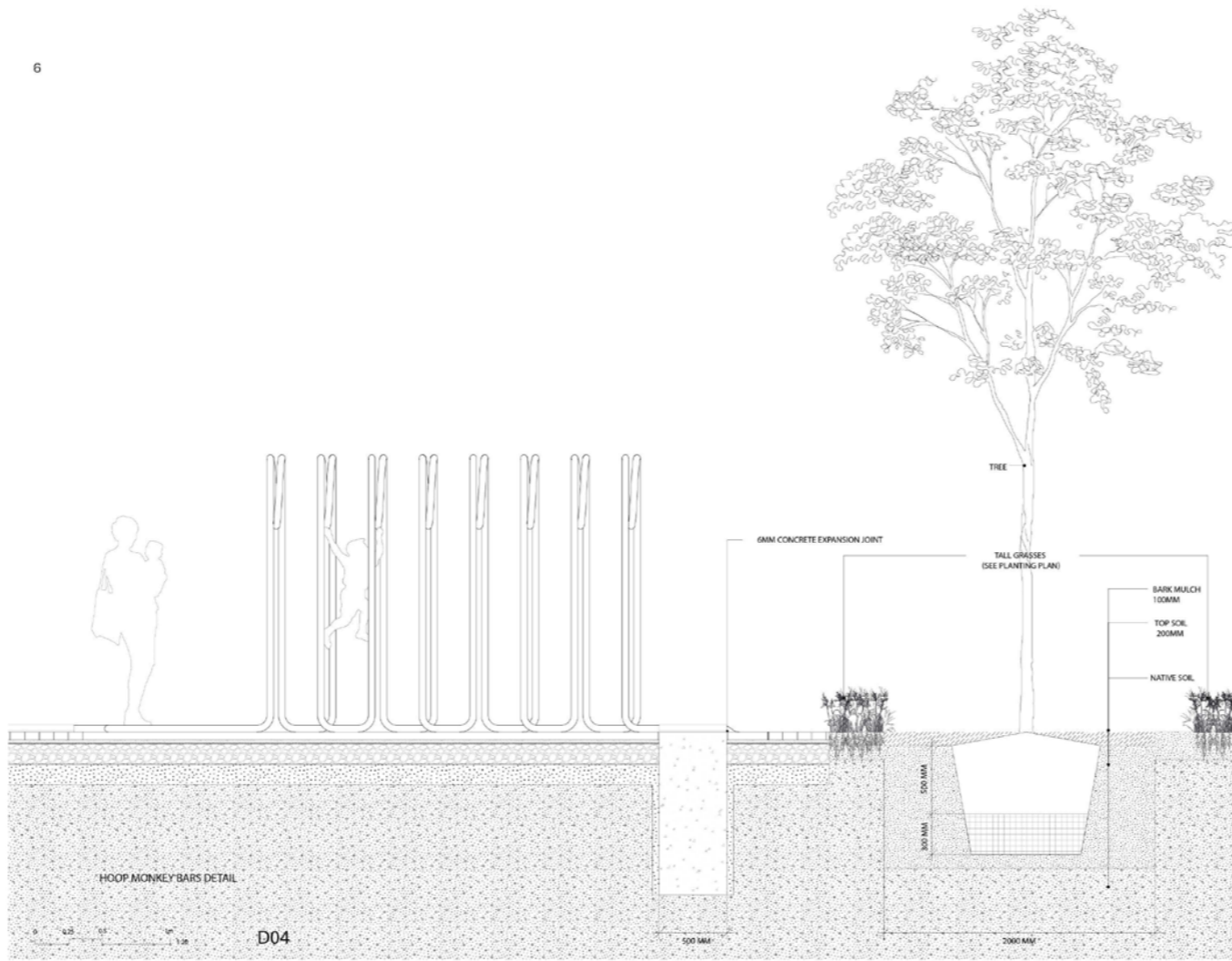
1 | Typology Diagrams for Integral Elements of Park Design and Elements of Play and Physical Activity | 2 | Typology Fitness Routines for Level 1: Beginner; Level 2: Intermediate; and Level 3: Advanced Individuals | 3 | Plant Inventory for Native and Resilient Species for Sunny Soil Highlighting Growing Requirements, Seasonal Interest, and Types of Pollinators the Plant Attracts, Perennial and Grass Species



4



6

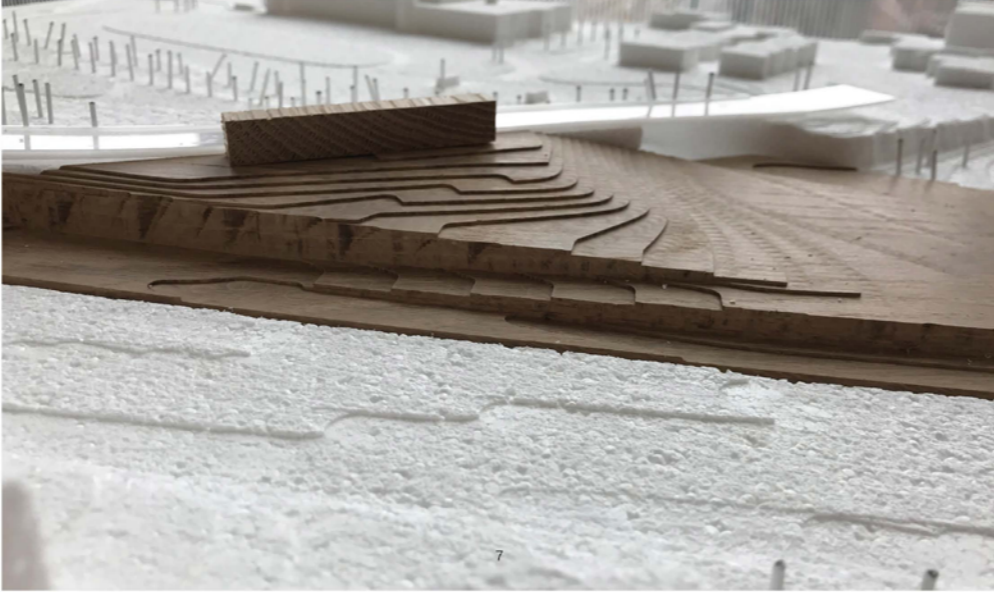


5

**Captions:**  
4 | From Left to Right: Entrance Plaza with Community Fitness Centre; Picnic Area and Children's Play Area with Sandbox; Basketball Zone; Fitness Zone; Fitness Area with Lawn for Group Activity; Lawn Game Area; and Neighborhood Play Area. 5 | Detailed Plan of the Connection Between the Hoop Monkey Bars and Six-Seater Picnic Table with Plant List. 6 | Detailed section of the Connection Between the Hoop Monkey Bars and Six-Seater Picnic Table with Plant List. 7 | Three Photos of Our White Oak CNC'd Insert Topography Model, from Left to Right: with Spine; Showing the Steepest Part of our Site on the North Side of the Atypical Site; and the Entirety of the Topography of the Atypical Site as it Connects to the Greater Context. 8 | Perspectives, from Left to Right: a Summer Scene of the Picnic Area with the Grassy Slope Behind; and a Fall Scene of a Play area with Tall, Un-Mown, Native Grasses Behind



7



8



8